

APPENDIX A. HINGES AND OTHER DECORATIVE METALWORK.

Illus No

:As found on Haward spinets.

1.....Iron lid hinge "Angry lady" type.

2.....Iron flap hinge.

:As found on Player and Cawton Aston spinets.

3.....Lid hinge

4.....Flap hinge

5.....Lid catch plate on bentside

:As found on Keene spinets.

6.....Main lid hinges

7.....Flap hinge

8.....Flap lock escutcheon and hasp

:As found on Hitchcock spinets e.g. No. 1007

9.....Main lid hinge

10.....Flap hinge

11.....Flap lock escutcheon

:As found on Hitchcock spinets e.g. No. 1547

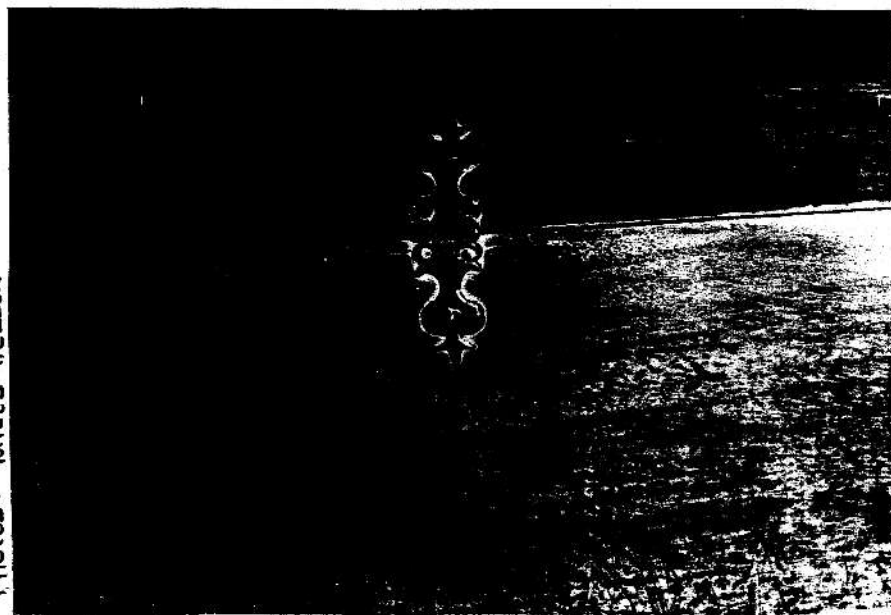
12.....Main hinge and flap hinge

13.....Flap lock

14.....Lid catch hook on bentside

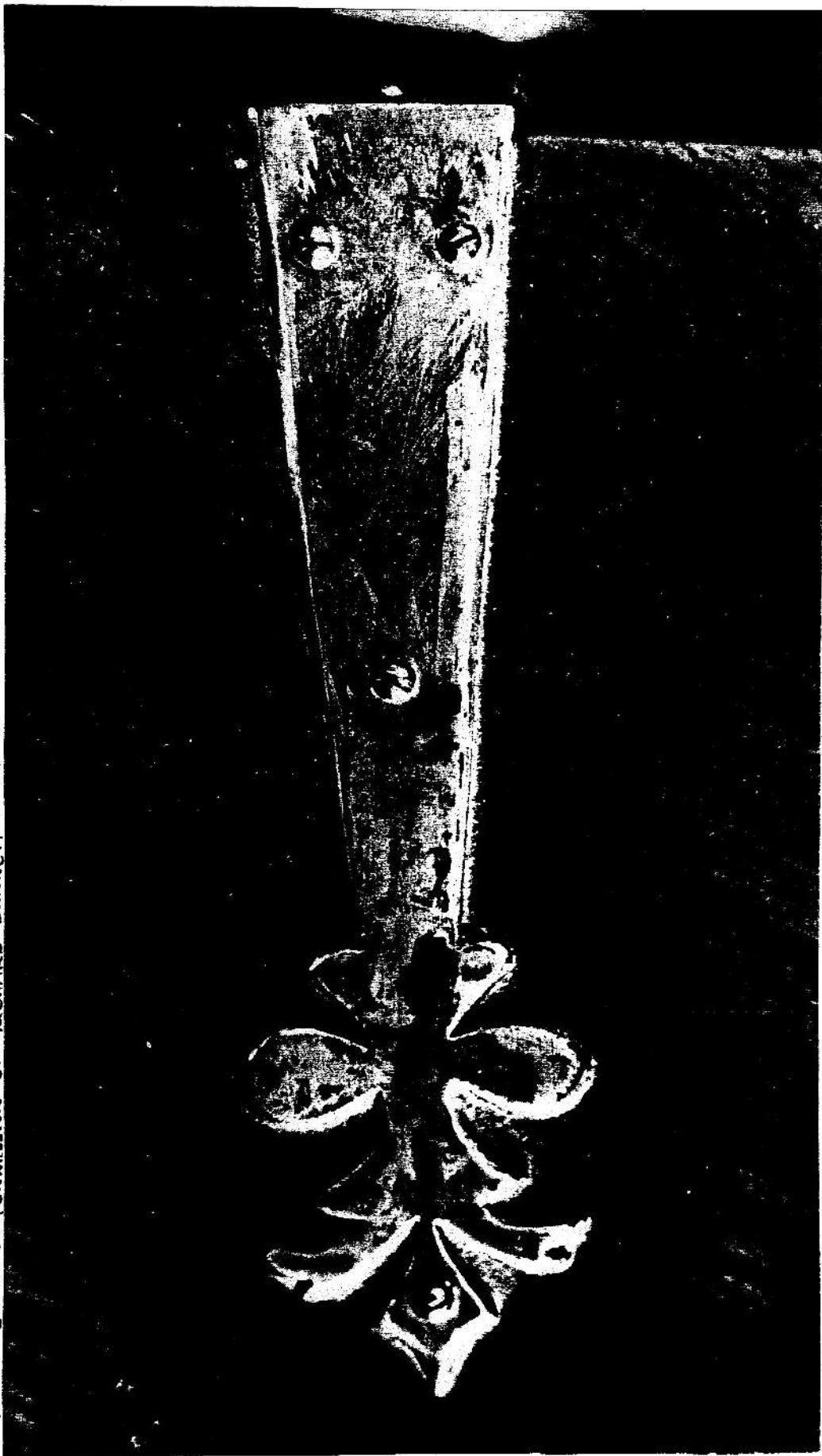


1

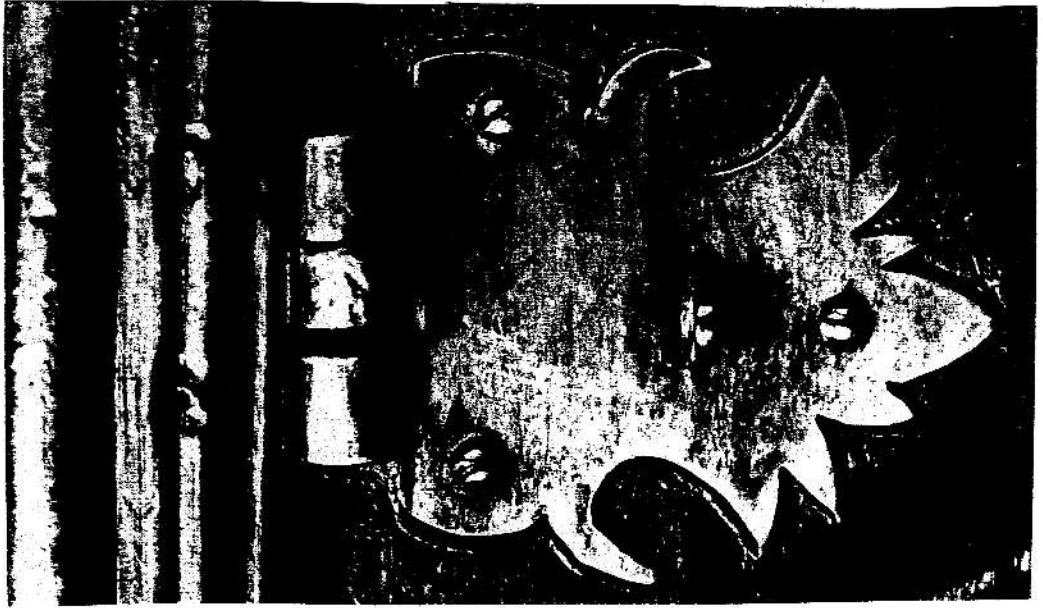


PHOTOS. MILES HELLON

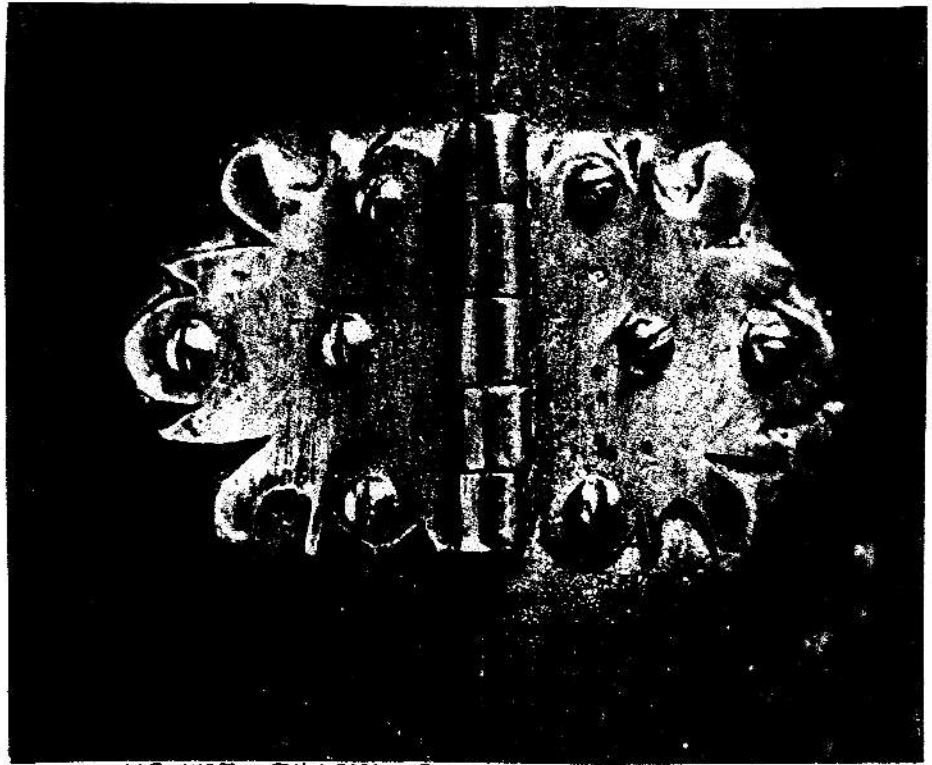
2



PHOTOS BY KIND PERMISSION OF RICHARD BURNETT



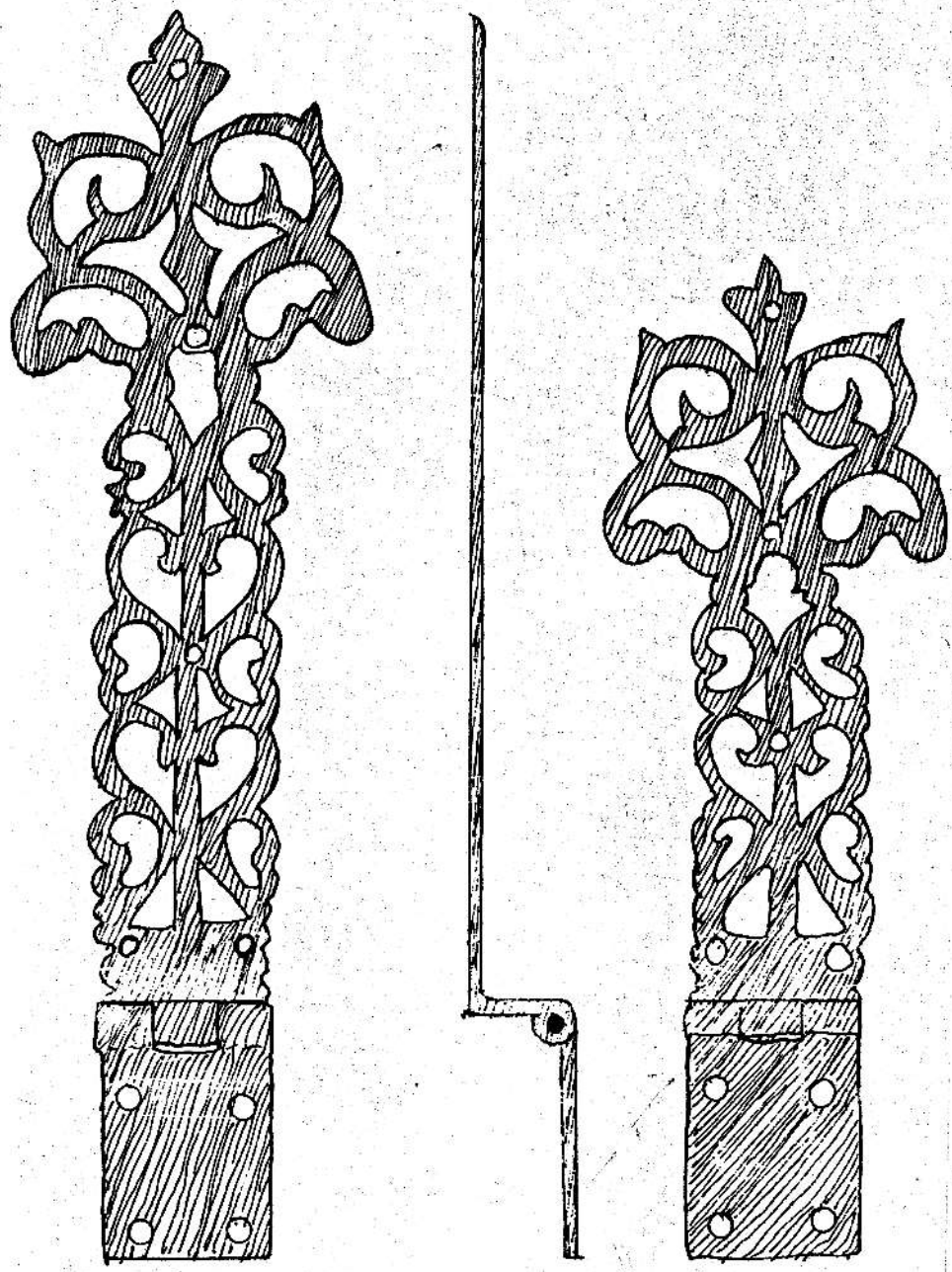
5

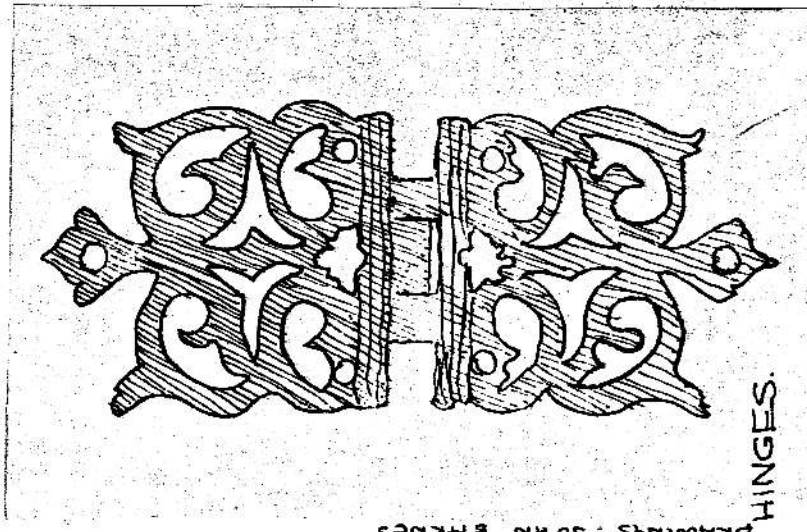


4

PHOTOS BY KIND PERMISSION OF RICHARD BURNETT

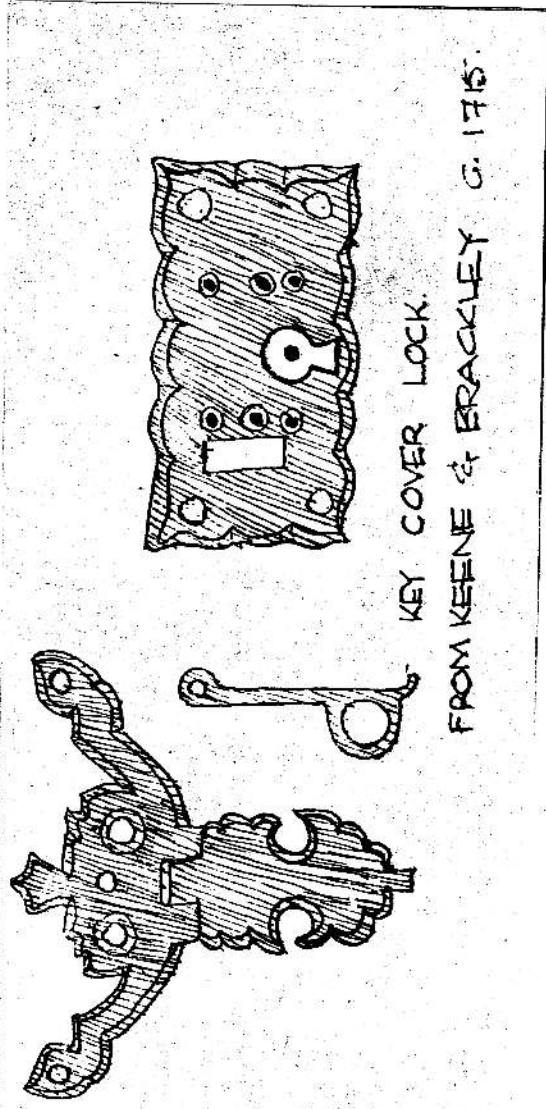
DRAWINGS BY JOHN BARNES





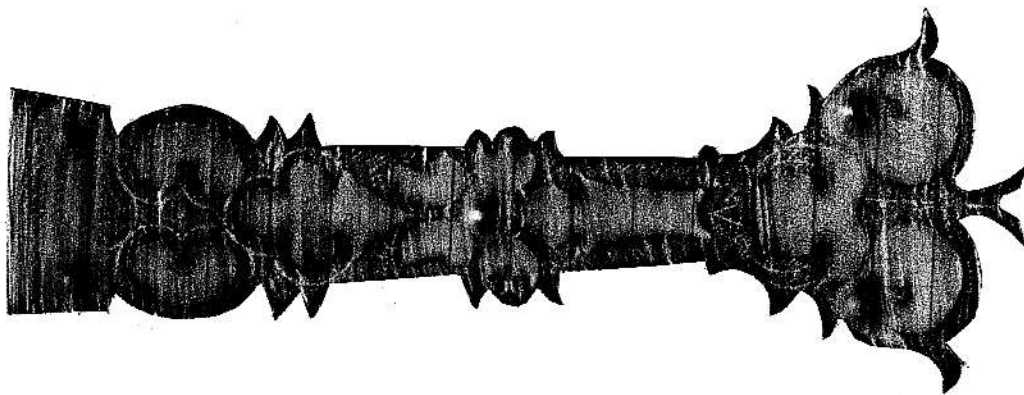
DRAWINGS: JOHN BARNES
HINGES.

7



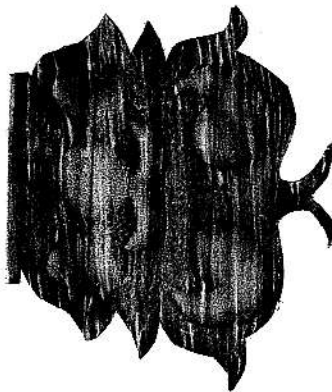
KEY COVER LOCK.
FROM KEENE & BRACKLEY G. 1715.

8

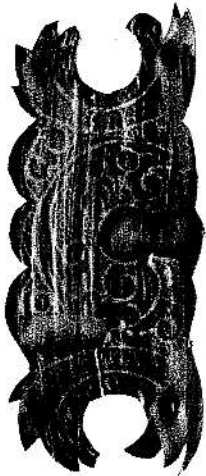


9

BY KIND PERMISSION OF PETER DAVIES.



10



11



A4/45

12

PHOTOGRAPHED WITH KIND PERMISSION OF NEIL BLACK



A4/41

13



A4/37 14